

PONSSE ACADEMY 360° TRAINING SOLUTION FOR FOREST MACHINERY

ONLINE
LEARNING

SIMULATOR
EXERCISES

PRACTICAL
TRAINING

COMPETENCE
EVALUATION

PONSSE SIMULATOR SYSTEMS AND WORKSEED LMS

Ponsse's training simulators and Workseed LMS platform offer a comprehensive training solution for educational institutions in the forestry sector for more efficient use of different learning environments. In the solution, Workseed offers a four-phase digitalized training program for forest machine drivers:

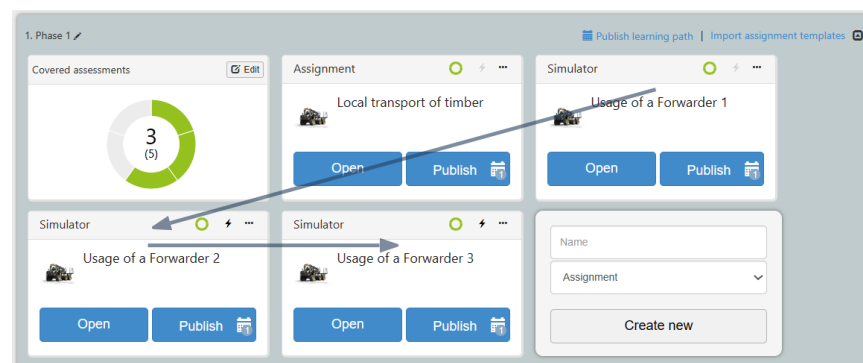
1. Online learning
2. Simulator exercises
3. Practical training
4. Driver's competence evaluation based on the curriculum

THE SOLUTION IMPROVES THE QUALITY OF DRIVER TRAINING AND SAVES COSTS

Workseed automates student guidance in the learning environments in use. It visualizes the exercises for the student in different learning environments into an easy-to-understand and followable path.

The dependencies created between the assignments guide the students on their path, for example, so that training performed on a real forest machine is only allowed when the required skill level has been demonstrated with the simulator.

Workseed enables students to progress at their own pace. The parties always know where the student is progressing and what needs to be done next. The solution increases the uniformity of education.



ONLINE LEARNING

The solution includes sample training material produced by Ponsse and interactive tasks for the forest machine operator. Teachers can build suitable courses from the material. The training materials are packaged on the Workseed LMS platform based on the curriculum, which is convenient for the educational institution.

Available training material covers e.g. the following areas: Manufacture of mechanized timber, maintenance of forestry machinery and local transport of timber.

Ponsse offers customized training material on-demand basis. Customized training materials are priced separately.

SIMULATOR EXERCISES

The solution includes the market's most advanced software integration between Ponsse's simulator software and Workseed. Thanks to the integration, the trainer can group the simulator exercises into courses in Workseed, and the results of the completed simulator exercises are transferred to Workseed automatically, so that the skills achieved by the trainees using the simulator can be seen in Workseed.

PRACTICAL TRAINING

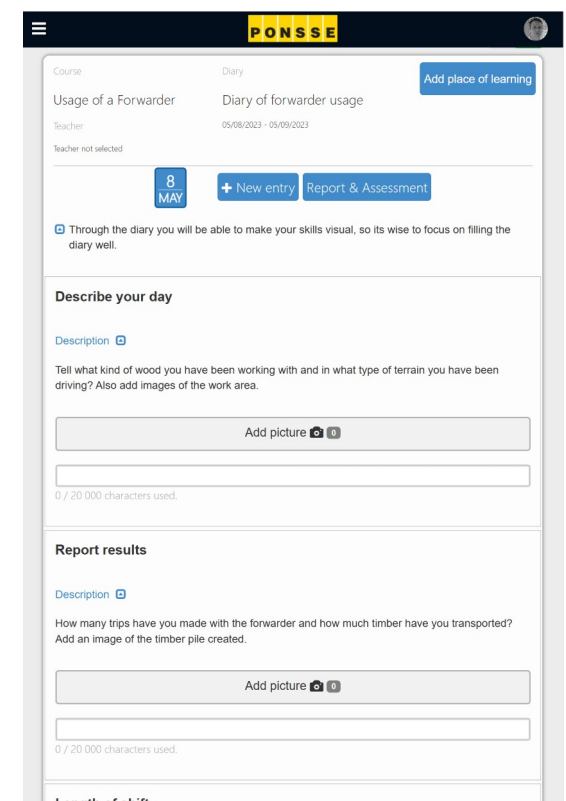
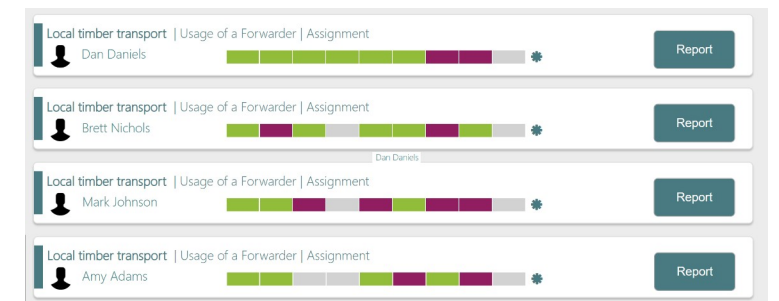
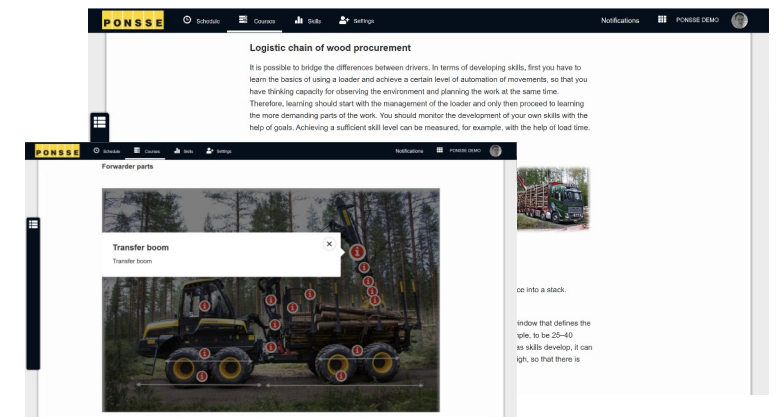
The solution includes ready-made practical exercises and learning diary templates for training on a real forest machine and for documenting personal development.

The trainer can easily follow the progress of his own students from Workseed and give feedback regardless of time and place. The platform monitors students' activity and reminds them of current tasks if necessary. The exercise reports produced by the student are accumulated in a personal portfolio.

COMPETENCE EVALUATION

The solution includes the curriculum of the vocational qualification in forestry and sample assignments for skill demonstrations. The essential courses of the curriculum including professional competences and evaluation criteria can be used directly by trainers. Evaluation forms can also be easily shared with the workplace supervisors, which enable online evaluation in Workseed.

Students' grades can be transferred automatically to the student information system (SIS connector must be purchased separately).



"PONSSE AND WORKSEED RAISED OPERATOR TRAINING TO THE NEXT LEVEL AT REDU!"



*Ilkka Rantahalvari
Lapland Education Centre REDU*

Additional info:
Jussi Jurvanen
Product trainer, simulator specialist
+358 40 575 1334
jussi.jurvanen@ponsse.com

Teemu Tiainen
Solution Specialist
+358 40 662 6682
teemu.tiainen@workseed.fi